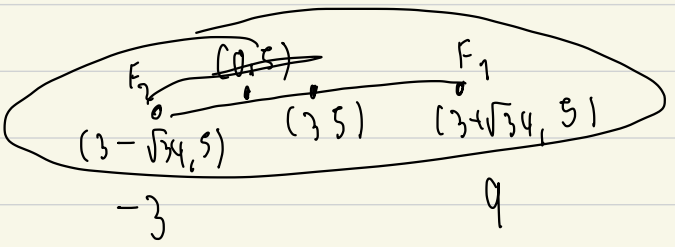


2) $(h, k) = (3, 5)$ $a = 3, b = 5$ $c = \sqrt{34}$
 จุดตัดวงกลม $\rightarrow (3 + \sqrt{34}, 5), (3 - \sqrt{34}, 5)$



2)

3) $a_1 + a_2 = 10$

20 \rightarrow 970 0
 1100 7
 971 8
 นี้อาจมาจากผล 0
 2 ครั้ง อาจมีผล = 7, 8

19 \rightarrow 5 = 1 - 99 ผลบวกคี่คี่
 $\hookrightarrow 6, 16, 26, 36, 46, 56, 66, 76, 86, 96$

18 \rightarrow $63a + 14b + c = 486$
 $441 + 2 + 3 = 446$
 483

17) $7 + 8 + 6$ คี่ \rightarrow 6 ี่ น
 $9 \rightarrow 24$ ี่ น

(6) ี่ 14 ี่ น, ี่ 8 ี่ น, ี่ 24, ี่ 14 ี่ น

1	2	3
2	7	7 7
3	4	5
4	3	3
5	3	5

15) a, b นี่ น
 50
 600

14 \rightarrow $\frac{800}{100} \times 148 = 1020$
 L ี่ 17540%
 $\frac{100}{50} \times 1020 = 2040$

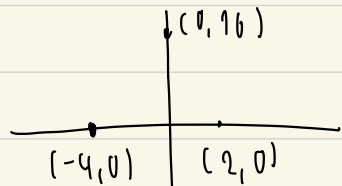
13) 40 AHA

УЖА	65	14	70	18	76	12	83	5	↑ 82 ↓ 42
УЖА	62	20	71	17	77	11	84	4	
УЖА	60	21	72	16	78	10	85	3	
			73	15	79	9	86	2	
			74	14	80	8	87	1	
			75	13	81	7			
					82	6			

5) $2 + 4 + 8 + 16 + 32 + 64 + 128 + 256$
 $1 \quad 2 \quad 3 \quad 4 \quad 5 \quad 6 \quad 7 \quad 8$

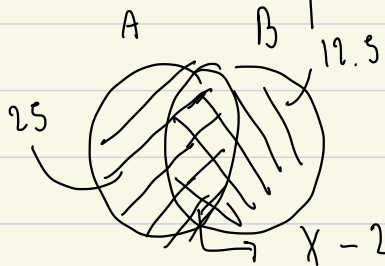
6) $N = \frac{8}{+41} \rightarrow N = \frac{8}{4} = 2 \text{ y. } 3$

7) $y = f(x)$



ex $A = \{1, 2, 3, 4\}$
 $B = \{1, 3, 6, 7\}$

8) $A \subset U$
 $B \subset U$



$A \quad B \quad 25\%$
 $B \quad A \quad 12.5\%$
 $(A - B) \cup (B - A) = 120$

$x - 25 - 12.5 = 100 \quad x = 62.5$

$(A - B) \cup (B - A) = 120$

$A = 62.5 - 25 = 37.5 \quad B = 50$

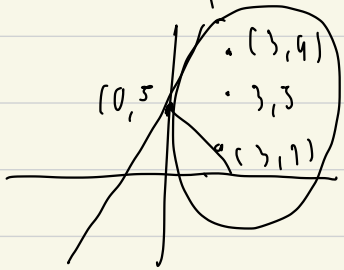
-0.43

$$9) \quad 1 - \lambda < -\frac{3}{7} < 7 - \lambda$$

$$-2 < -\frac{3}{7} < 4 \rightarrow (3)$$

$$-5 < -\frac{3}{7} < 1 \rightarrow (6)$$

1)



$$(h, k) = (3, 5)$$

$$\frac{(11-5)^2}{25} - \frac{(\lambda-3)^2}{9}$$

$$a = 3, \quad b = 5, \quad c = 4$$

q. a. m. n. d. $(3, 1), (3, 9)$

$$d = \frac{9-5}{3-0} = \frac{4}{3}$$

$$y - 4 = \frac{4}{3}(x - 3)$$

$$y - 5 = \frac{3}{4}(x - 0)$$

$$= 4x - 3y + 13$$

$$\frac{|4(3) - 3(9) + 13|}{\sqrt{4 + 16}} = \frac{24}{5} \neq$$

$$2) \frac{11^{11}}{1210} = \frac{11^2 (11)^{109}}{1210} = \frac{121 (11)^{109}}{121 \times 10}$$

$\therefore 11^9 = 121$

$$14 = \frac{140 \times 800}{100} = 1120 \quad \frac{1100 \times 100}{50} = 2200$$

$$17) \begin{array}{l} \text{b} \\ 1 \\ 24 \\ 1 \end{array} \begin{array}{l} \text{v} + \text{v}_2 + \text{v} \\ \text{v} \\ \text{v} \\ \text{v} \end{array} \begin{array}{l} 1 \\ \frac{1}{6} \\ 1 \\ \frac{1}{24} \end{array} \begin{array}{l} \text{v} \\ \text{v} \\ \text{v} \\ \text{v} \end{array}$$

$$1 \text{ v} + \text{v} \quad \frac{1}{6} - \frac{1}{24} = \frac{1}{8}$$

$$4 \text{ v} + \text{v} + \text{v} \quad 4 \frac{1}{3} = \frac{2}{3}$$

$$19 \text{ v} \text{ v} \quad 1 - \frac{2}{3} = \frac{1}{3}$$

$$\therefore \frac{1}{3} \times 1 \times 8 = 2.67 = 3 \text{ v} \#$$

$$15) \begin{array}{l} 50 \rightarrow 2 \times 25 \\ 600 \rightarrow 8 \times 3 \times 25 \end{array}$$

$\begin{matrix} \text{---} 5 \times 5 \\ \text{---} 2 \times 3 \\ \text{---} 5 \times 3 \end{matrix}$

$\therefore a = 150 \rightarrow 2 \times 5^2 \times 3$
 $b = 200 \rightarrow 2^3 \times 5^2$

$$8) (A \cap B) \quad n(A) = 5x$$

$$n(B) = 4x$$

$$(5x - x) + (4x - x) = 12$$

$$x = 16$$

$$\therefore n(A \cup B) = 12 + 16 = 28$$

7)

$$V = 16$$

$$f(0) = 16$$

$$f(0) = k(0+4)(0-2)$$

$$16 = k(4)(-2)$$

$$-2k$$

$$f(x) = -2(x+4)(x-2)$$

$$= -2x^2 - 4x + 16$$

$$\frac{40(-1)^2}{40} = \frac{-128 + 16}{-8} = 18 \frac{1}{4}$$

30) $5 \text{ m/W} \rightarrow 0.5 \text{ m/W}$

$0.5 \text{ m/l} = \frac{x}{1} \times 100$

$x = 50 \text{ ml} \neq$

29) $\frac{2.2}{0.01} \times 2 = 440$ $\frac{3.1}{0.01} \times 4 = 1240$

28) $\frac{60}{1.6 \times 1.6} \approx 23.44$

6) E G D H C (I)
5 7 4 8 3 (9)

7) 10 14 19 27 44

26) e 22 | 20 0 29 | 15 A 26 | 30 e 4 e 17 | 12
 1.1 / sec 1.3 / sec 0.9 / sec 1.41 / sec
 66 28 (54) 84.6

5 - 49
 44 - 48
36 - 40
 - 43
 - 100

B E J R B F L R B F M P 4 8 12 16 20 24

1	A	H	F	6	→ 15
5	E	0	J	10	→ 30
7	G	?	I	9	→ 16+x
13	23+x	↓	25		

4.5
16
 29
15
 4

5) 6 10 18 30 46 66 90

8) 1 3 7 15 31 63

$$9) \quad 9 \xrightarrow{+9} 18 \xrightarrow{-4} 14 \xrightarrow{+14} 28 \xrightarrow{-4} 24 \xrightarrow{+24} 48 \xrightarrow{-4} 44$$

$$16) \quad 4 \xrightarrow{8} 12 \xrightarrow{56} 68 \xrightarrow{562} 630$$

17) $\lambda = 470$ $\lambda = 670$ $\lambda = 710$ $\lambda = 750$
 အလင်းရောင်များကို အကွာအဝေးများကို အကွာအဝေးများကို အကွာအဝေးများကို
 အကွာအဝေးများကို အကွာအဝေးများကို အကွာအဝေးများကို
 အကွာအဝေးများကို အကွာအဝေးများကို အကွာအဝေးများကို

$$19) \quad \epsilon = \frac{640}{2^n} \quad \left| \quad T = n \cdot \frac{t}{2} \right.$$

$$2^n = 132 \quad \left| \quad T = (7.04) (4.5 \times 10^9)
$$n = 7.04$$$$

13) $(30 \times 6) + (60 \times 12) + (30 \times 6)$
 $180 + 720 + 180 = 1080$
 $\frac{1080}{120} = 9 \text{ m/s}$

18) d, λ, ν, ω
 same ν λ ω ν
 အကွာအဝေးများကို အကွာအဝေးများကို အကွာအဝေးများကို
 အကွာအဝေးများကို အကွာအဝေးများကို အကွာအဝေးများကို

23) $d = \frac{m}{\nu}$ $\frac{4}{350} \times 10^8 = 1.14$
 $\nu = \frac{c}{\lambda} = 3. \times 10^8$

24) C F G B D E A
 1 2 3 4 5 6 7
 အကွာအဝေးများကို အကွာအဝေးများကို အကွာအဝေးများကို

25) G
 27) 1 ml \rightarrow 0.2
 7 ml \rightarrow 1.4
 $50 \times 7 \times 1$