

$$50 \sqrt{150 \ 200}$$

$$3 \ 140 \ 4$$

$$50 \sqrt{150 \ 400}$$

$$3 \ 8 \ 2 \ 3$$

$$1120 \times 2$$

1	8	6
5	11	10
9	X	9

$$17 \ 750$$

$$56 \ 21 \times$$

$$21 \times 20 = 420$$

$$12 \ 00 \ 2 \ 1 \ 5$$

$$135 \ 2 \ 1 \ 8$$

$$540 \ 2 \ 1 \ 2 \ 3 \ 4$$

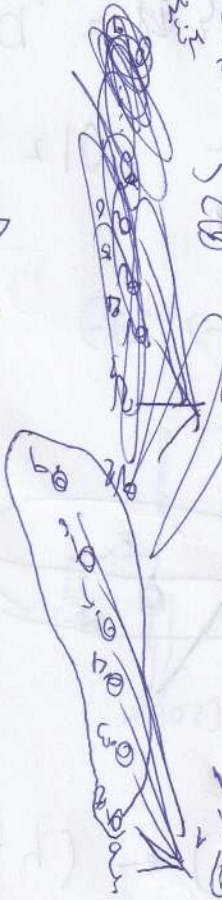
$$62 \times 60 = 3720$$

$$16 \ 26 \ 11$$

$$35 + 194 + X$$

$$135 \ 2 \ 1 \ 8$$

$$129 \ 2 \ 61 \times 200$$

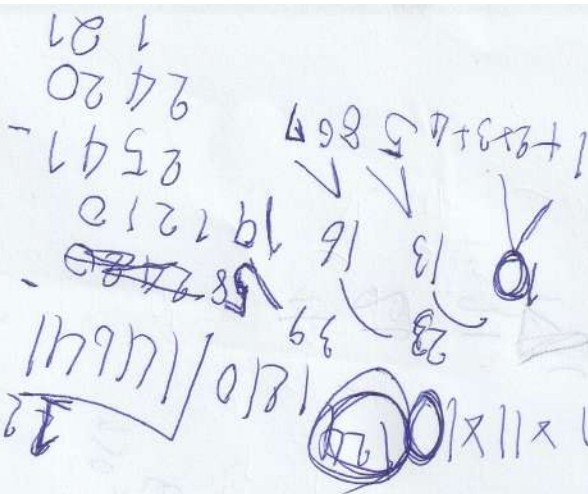


$$944 \cdot 97X = 1$$

$$11 \ 16 \ 26 \ 11$$

$$944 + 97X = 2$$

$$944 + 63X = 2$$



$$a_3 + a_4 = 16$$

$$a_2 + a_3 = 13$$

$$a_1 + a_2 = 10$$

$$a_1 + 2a_2 + a_3 = 23$$

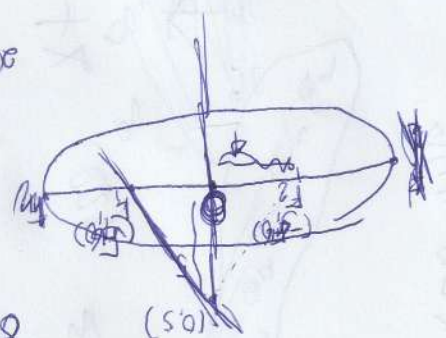
$$a_2 + a_3 = 13$$

$$a_3 - a_1 = 3$$

$$a_1 + a_2 = 10$$

$$16 + a_5 = 41$$

$$(-5) - (-2) = 3$$



$$(x, y) \rightarrow (3, 5)$$

$$\frac{9}{(x-3)^2} + \frac{9}{(y-5)^2} = 21$$

$$1810 / 14641$$

$$11 \times 11 \times 11$$

$$11 \times 11 = 121$$

$$11 \times 11 = 121$$

$$11 \times 11 = 121$$

$$11 \times 11 = 121$$

$$11 \times 11 = 121$$

$$11 \times 11 = 121$$

$$11 \times 11 = 121$$

$$11 \times 11 = 121$$

$$11 \times 11 = 121$$

$$11 \times 11 = 121$$

$$11 \times 11 = 121$$

6.25
6.75
7.25
7.75
8.25
8.75
9.25
9.75
10.25
10.75
11.25
11.75
12.25
12.75
13.25
13.75
14.25
14.75
15.25
15.75
16.25
16.75
17.25
17.75
18.25
18.75
19.25
19.75
20.25
20.75
21.25
21.75
22.25
22.75
23.25
23.75
24.25
24.75
25.25
25.75
26.25
26.75
27.25
27.75
28.25
28.75
29.25
29.75
30.25
30.75
31.25
31.75
32.25
32.75
33.25
33.75
34.25
34.75
35.25
35.75
36.25
36.75
37.25
37.75
38.25
38.75
39.25
39.75
40.25
40.75
41.25
41.75
42.25
42.75
43.25
43.75
44.25
44.75
45.25
45.75
46.25
46.75
47.25
47.75
48.25
48.75
49.25
49.75
50.25
50.75

6.5-4.5 = 2
7.5-5.5 = 2
8.5-6.5 = 2
9.5-7.5 = 2
10.5-8.5 = 2
11.5-9.5 = 2
12.5-10.5 = 2
13.5-11.5 = 2
14.5-12.5 = 2
15.5-13.5 = 2
16.5-14.5 = 2
17.5-15.5 = 2
18.5-16.5 = 2
19.5-17.5 = 2
20.5-18.5 = 2
21.5-19.5 = 2
22.5-20.5 = 2
23.5-21.5 = 2
24.5-22.5 = 2
25.5-23.5 = 2
26.5-24.5 = 2
27.5-25.5 = 2
28.5-26.5 = 2
29.5-27.5 = 2
30.5-28.5 = 2
31.5-29.5 = 2
32.5-30.5 = 2
33.5-31.5 = 2
34.5-32.5 = 2
35.5-33.5 = 2
36.5-34.5 = 2
37.5-35.5 = 2
38.5-36.5 = 2
39.5-37.5 = 2
40.5-38.5 = 2
41.5-39.5 = 2
42.5-40.5 = 2
43.5-41.5 = 2
44.5-42.5 = 2
45.5-43.5 = 2
46.5-44.5 = 2
47.5-45.5 = 2
48.5-46.5 = 2
49.5-47.5 = 2
50.5-48.5 = 2