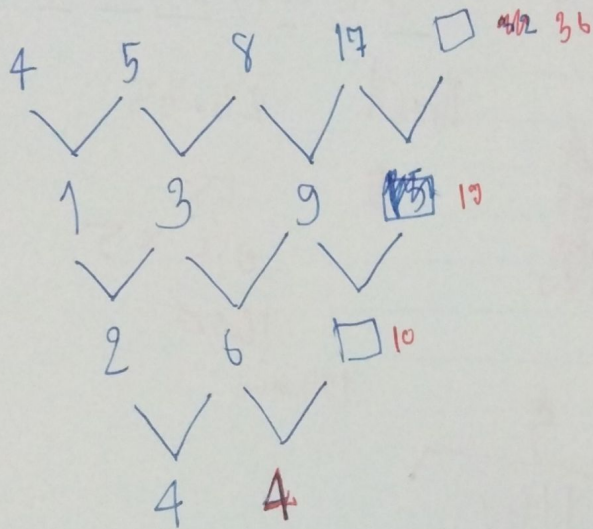
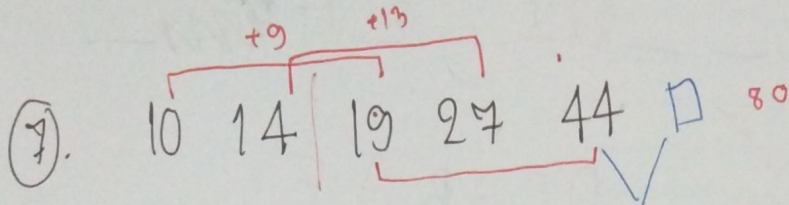


24  
14  
13  
41

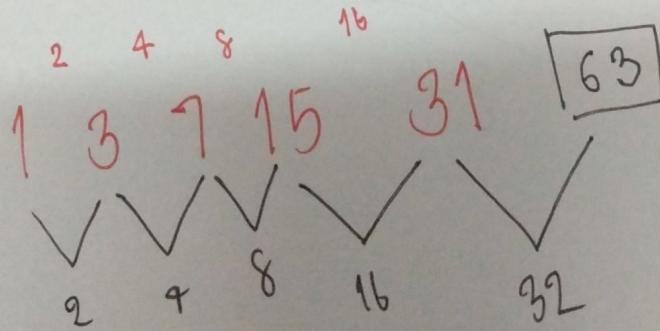
3  
44  
27  
17

⑥ E G D H C I B ~~J A~~

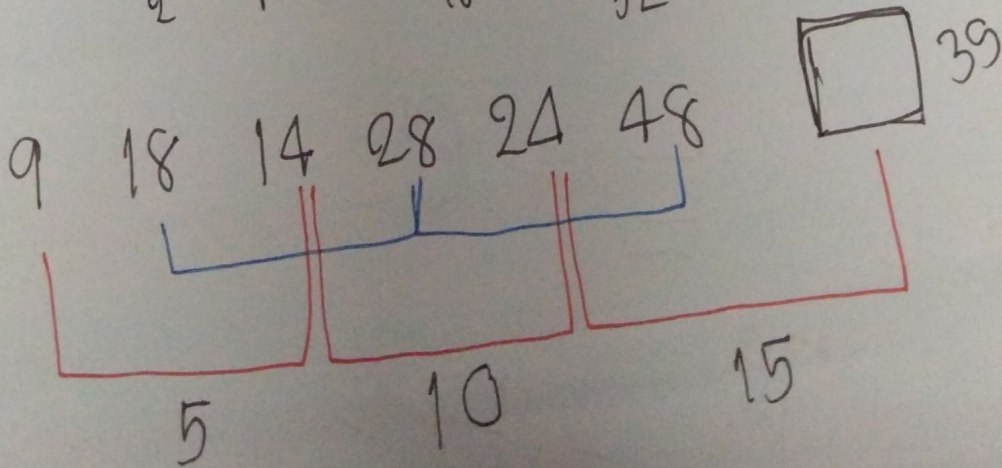
44  
32  
76

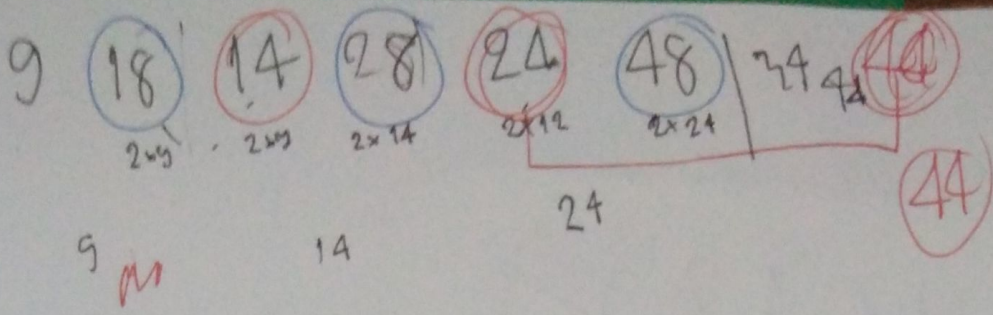


⑧

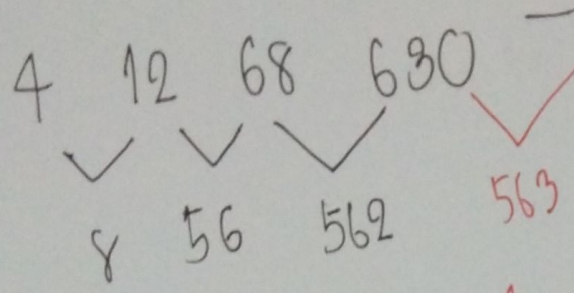


⑨





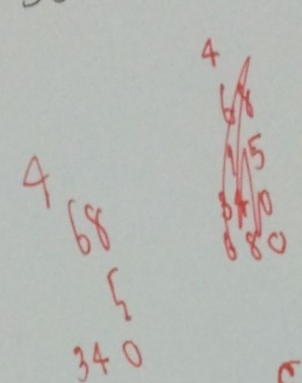
DF BA



DC GB AF

90h 90x52

9/50



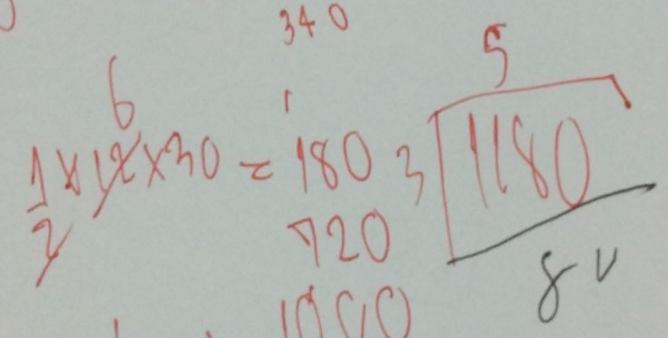
NaCl 23.25

5 58

0.5 x 5

1000

10hmm



1 2x10 = 1 1000

2 10x

Pb

A B C D E F G

D C G B A F E

A-D=3

510

64

320

$$2 + 4 + 8 + 16 + 32 + 64 + 128 + 256 = 510$$

40 ml  
AUB

138000 (62)

19320

20130

40% x 800

320

1000

61

214240

$$2 + 4 + 8 + 16 + 32 + 64 + 128 + 256 = 510$$

A-B

A/B

400

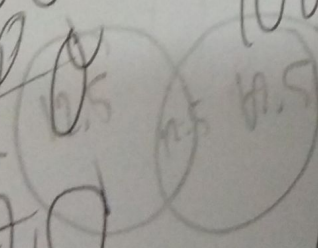
100 400

1120 x 50

170 x 290

100

270



270

100 600

1120

9000

100 300 500

$$(5x - x) + (4x - x) = 120$$

100

2 6

2 30

+4 +8 +12 +16

- ④ 6
- ⑦ 7
- ⑨ 8

$$a + b + c = ?$$

8!  
1, 2, 3, ..., 9

486

$$(63 \times a) + (14 \times b) + c = 486$$

$63 \times 2$      $14 \times 3$   
 $126$      $42$   
 $168$

H I J  
A B C

BEJR    BF LR. BFMP

A B C ~~D~~ E F I J K L M N O