

$$2(1 + 2^1 + 2^2 + \dots + 2^{\frac{n}{2}}) = 110$$

$$1 + 2 + 4 + \dots + 2^{\frac{n}{2}} = 255$$

$$2 + 4 + 8 + \dots + 2^{\frac{n}{2}} = 254$$

$$(4) \quad (8) \quad (12) \quad \dots \quad (44)$$

$$\frac{86}{2} = 43$$

- ① ② ③ ④ ⑤ ⑥ ⑦ ⑧

$$2a_1 + 2a_3 + 2a_5 + \dots + 2a_{19} = 3$$

$$a_1 + a_3 + a_5 + \dots + a_{19} = 15$$

$$a_1 + a_2 = 10$$

$$a_{n+2} - a_n = 3$$

$$a_1 + a_2 = 10$$

n=1

$$a_3 - a_1 = 3$$

$$a_1 + a_2 = 10$$

$$a_3 = 3 + a_1$$

$$a_4 = 3 + a_2$$

$$a_5 = 3 + a_3$$

$$a_6 = 3 + a_4$$

$$a_3 + a_4 = 6 + 10 = 16$$

$$a_1 + a_2 + \dots + a_n = 40$$

$$a_1 + a_2 = 10$$

$$a_3 + a_4 = 16$$

$$a_5 + a_6 = 6 + 10 = 16$$

$$a_7 + a_8 = 28$$

$$10 \quad 16 \quad 22 \quad 28$$

$$(1 \times 6) + (2 \times 6) + (3 \times 6) + 4$$

$$124$$

$$20 \times 6$$

11³

$$11 \times 11 \times 11 = 1331$$

$$11 \times 11 = 121$$

$$11 \times 11 \times 11 = 14641$$

$$11 \times 11 \times 11 \times 11 \times 11 = 161051$$

$$\frac{20 \times (124 + 10)}{2}$$

$$7 - 7x < -3 < 49 - 7x$$

$$7 - 7x + 6x < -3 + 6x < 49 - 7x + 6x$$

$$7 - x < -3 + 6x < 49 - x$$

$$7 < -3 + 7x < 49$$

$$10 < 7x < 52$$

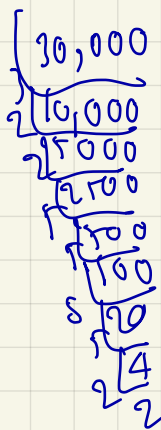
$$\frac{10}{7} < x < \frac{52}{7}$$

$$1 < x < 7$$

~~1 < x < 7~~

$$100 \times 600$$

$$= 30,000$$



$$10 \begin{array}{r} 300 \quad 1002 \\ \hline 6 \end{array}$$

$$10 \begin{array}{r} 100 \quad 200 \\ \hline 3 \quad 4 \end{array}$$

10012

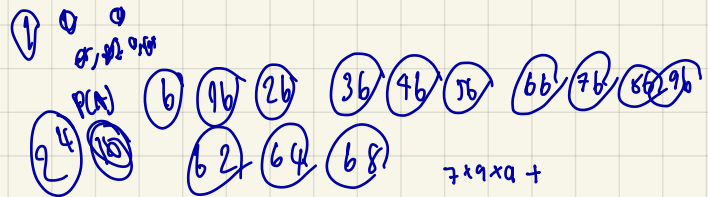
$$100 \rightarrow 140$$

$$100 \rightarrow \frac{800 \times 140}{100} = 1120$$

100 da 100

$$100 \rightarrow \frac{1120 \times 100}{100}$$

1002



$$2+2 \quad 3+$$

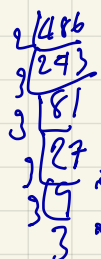
$$2+2 \quad 3+ \quad 2+2 \quad 3+ \quad 2+2 \quad 3+ \quad 2+2 \quad 3+$$

$$4-10 \quad -10 \quad 12$$

$$149 + 126 \quad 63 \times 7$$

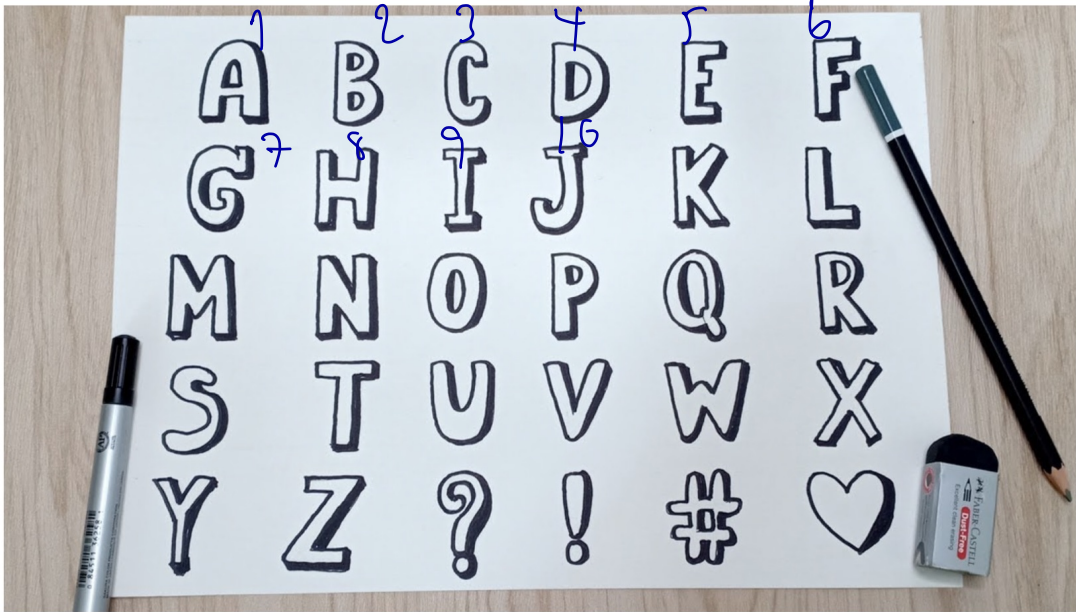
$$42 + 3$$

7 x 9 x 0 +



100 da 100
100 da 100
100 da 100

$$469$$



Pinterest

How to หัดเขียนตัวหนังสือสองชั้น A-Z น่ารักๆ | Drawing 3D Letters ...

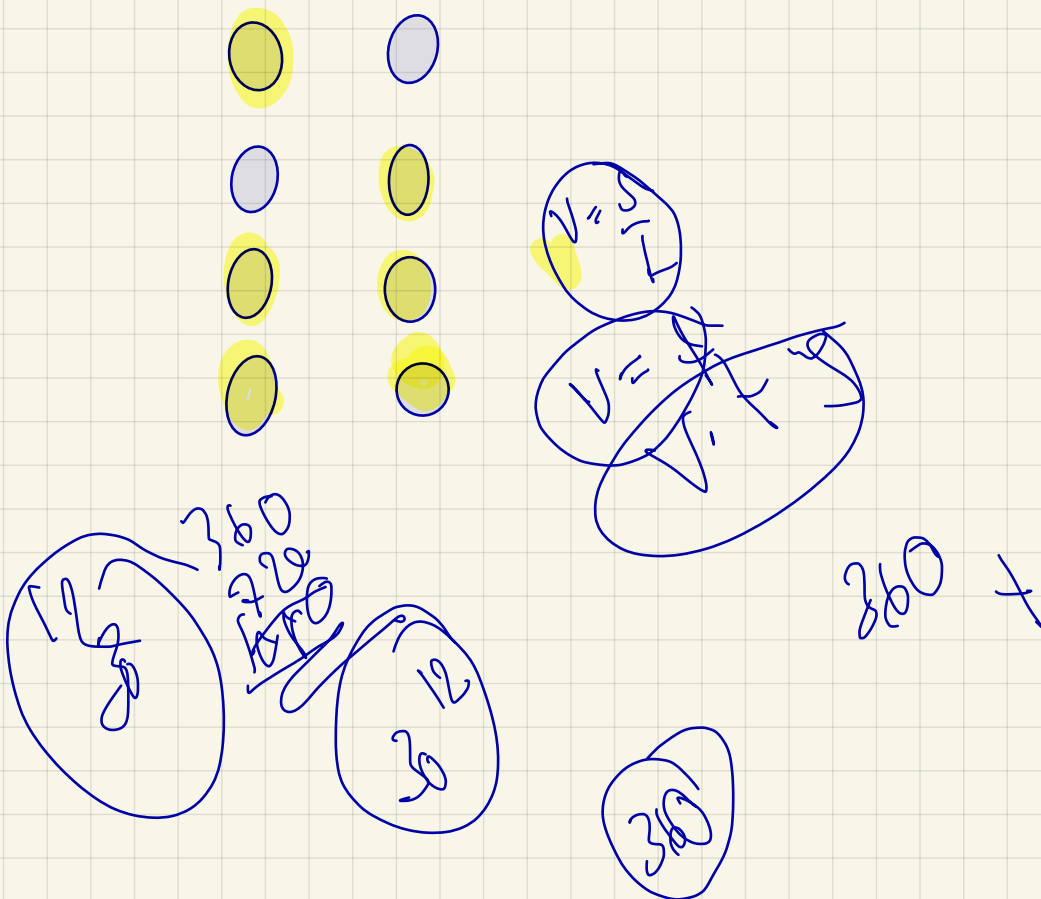
Visit

ภาพอาจมีลิขสิทธิ์ ดูข้อมูลเพิ่มเติม

→ 5 7 4 8 3 9

แสดงรูปภาพทั้งหมดของ ตัวหนังสือภาษาอังกฤษ

รูปภาพที่เกี่ยวข้อง



$$\frac{58}{1.6 \times 1.6} = \frac{58}{2.56} = 22.656 = 31.15 \text{ 90\%}$$

$$\frac{61}{1.6 \times 1.6} = \frac{61}{2.56} = 23.828 = 21.6124$$

21100

$$\underline{\underline{25.93 \text{ 22\%}}}$$

$$\frac{80}{3.2041} = 24.968 \times 1.18 = 29.46$$

$$A = \frac{80}{3.16} = 25.316 \text{ 17\%}$$

$$B = \frac{99}{3.24} = 30.556 \text{ 20\%}$$

$$C = \frac{78}{2.89} = 27.0 \text{ 17\%}$$

9 0 2 4 1 1 1

Q = MCAT
480

$$\frac{4}{300} = 0.0133$$

1 2 3 4
A B C D E F G

1
8
15
22
29

C F D B G A E
① ② ③ ④ ⑤ ⑥ ⑦