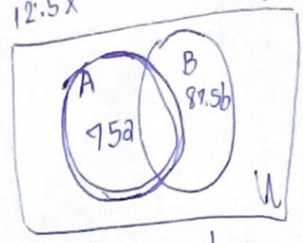


② $a_n = a_1 r^{n-1}$

⑧ $25\% \cdot A \rightarrow b$ $\frac{25}{100} = \frac{1}{4} A \in B \rightarrow 4x$
 $12.5\% \cdot B \rightarrow A$ $\frac{12.5}{100} = \frac{1}{8} B \in A \rightarrow 8x$



$(4x - x) + (8x - x) = 120$
 $3x + 7x = 120$
 $10x = 120$
 $x = 12$

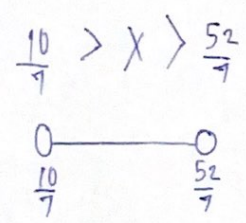
③ $a_1 + a_2 = 10$
 $a_{n+2} - a_n = 3 \quad n \in \{1, 2, 3\}$

$75a + 87.5b = 120$

⑦ $1 - x < -\frac{3}{7} < 7 - x$
 $1 - x < -\frac{3}{7} \quad | \quad -\frac{3}{7} < 7 - x$
 $1 + \frac{3}{7} > x \quad | \quad x > 7 + \frac{3}{7}$
 $\frac{10}{7} > x \quad | \quad x > \frac{52}{7}$

⑨ $f(x) = 0 = -4, 2$ $n(A \cup B) = 120 + 12 = 132 \neq$
 $f(0) = 16$

$f(x) = k(x+4)(x-2) - \#$
 แทน $x=0 \quad f(0) = k(0+4)(0-2)$
 $16 = k(4)(-2)$
 $k = -2$



แทน $k=-2 \quad f(x) = -2(x+4)(x-2)$
 $= -2(x^2 + 2x - 8)$
 $= -2x^2 - 4x + 16$
 จะได้ $a = -2, b = -4, c = 16$

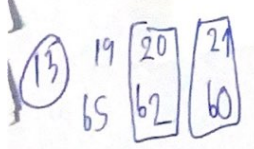
$\frac{52}{7} - \frac{10}{7} = \frac{42}{7} = 6 \neq$ พหุคูณสามค่า ค่าสูงสุด = $\frac{4ac - b^2}{4a}$

⑫ กำไร 40% = $\frac{40}{100} \times 800 = 320$
 $800 + 320 = 1120 \neq$
 $(1120 \times 2) = 2240 \neq$

$= \frac{4(-2)(16) - (-4)^2}{4(-2)}$
 $= 18$

$2240 \times \frac{50}{100}$

⑮ ๗๖๖
 ๑๑๗ ๗ $S = 420$
 ฟ้า ๘ $ฟ้า = 56$
 $\frac{56}{420} = \frac{2}{15}$



$n = 40 \neq$
 จำนวนเฉลี่ย $\frac{n+1}{2} = \frac{40+1}{2} = 20.5$

$\frac{62+60}{2} = 61 \neq$

⑯ $a+b+n \rightarrow 6$
 $\rightarrow 24$

A	H	F
E	O	J
G	I	

21) ~~XXXXX~~ ~~EE~~ ~~GG~~
 now → 277

5) $6 \quad 10 \quad 18 \quad 30 \quad 46 \quad 66 \quad 90$
 $\xrightarrow{+4} \xrightarrow{+4 \times 2} \xrightarrow{+4 \times 3} \xrightarrow{+4 \times 4} \xrightarrow{+4 \times 5} \xrightarrow{+4 \times 6}$

6) $4 \quad 12 \quad 68 \quad 636$
 $\xrightarrow{\times 3} \xrightarrow{\times 2} \xrightarrow{\times 2}$

7) $9 \quad 18 \quad 14 \quad 28 \quad 24 \quad 48 \dots -4$
 $\xrightarrow{\times 2} \xrightarrow{\times 2} \xrightarrow{\times 2}$
 $-4 \quad -4$

8) $1 \quad 3 \quad 7 \quad 15 \quad 31 \quad 63$
 $\xrightarrow{2^1} \xrightarrow{2^2} \xrightarrow{2^3} \xrightarrow{2^4} \xrightarrow{2^5=32}$

9) $10 \quad 14 \quad 19 \quad 29 \quad 44$
 $\xrightarrow{+4} \xrightarrow{+5} \xrightarrow{+8} \xrightarrow{+12}$
 $4 \quad 5 \quad 8 \quad 12$
 $(1) + (3) + (9) + 27 + 81$

$4+1 = 5+3 = 8+9 = 17+29 + 81 +$

10) $E \quad G \quad D \quad H \quad C \quad I$
 $5 \quad 7 \quad 4 \quad 8 \quad 3 \quad 9$
 $\xrightarrow{-1} \xrightarrow{-1}$

13)

- D L A 3 m 4

1 2 3 4 5 6 7
 C F ~~G~~ B G A A
 F F

D 7 ~~L~~ A

1 2 3 4 5 6 7
 C F D B A

90) $\frac{22}{20} \quad \frac{19}{15} \quad \frac{26}{30} \quad \frac{17}{12}$
 $\frac{1.1}{1.1} \quad \frac{1.26}{1.16} \quad \frac{0.86}{20} \quad \frac{1.4}{1.16}$
 $\frac{60-100}{60} \quad \frac{1.6}{60}$

1-40/7